

Latest news from the Keele Gateway

[View this email in your browser](#)*Here to help*European Union  
European Regional  
Development Fund

## Keele Gateway newsletter November 2021

**Keele University has the tools, expertise and resources to complement your organisation and enable it to reach its full potential.**

Whether you know exactly what you need or don't know where to begin to solve your problem, our team of experts will be delighted to help guide you towards the innovative solution that you're looking for.

[keele.ac.uk/gateway](https://keele.ac.uk/gateway)

01782 733001 | [gateway@keele.ac.uk](mailto:gateway@keele.ac.uk)

KEELE GATEWAY ANNIVERSARY

*Over 750*  
ORGANISATIONS  
SUPPORTED



**Keele Gateway marks fifth anniversary**

our thriving business community through innovation, research, collaboration and connections with Keele's students and graduates through a wide range of support programmes.

To date the Gateway has facilitated:

- Support to over 750 local organisations
- More than 520 talented students placements within organisations
- Creation of 120 full-time jobs
- 300+ Keele Apprenticeships
- Creation of 180+ new products, processes or services.

[Find out more about how Keele Gateway can help your organisation to recover, grow and thrive.](#)



## Keele hosts local leaders and businesses to address local action on the climate emergency

Earlier this month, Keele University hosted a series of sustainability-themed events as part of its own COP26 Festival event, engaging with over 500 local leaders, businesses, staff, students, school children, and residents.

The headline event of the Festival, the **Staffordshire Sustainability Leaders' Summit** ([which was recorded live](#)), featured a round table of regional leaders from across different sectors who came together to discuss what COP26 means to Staffordshire and what collective and individual actions can be taken to address the climate emergency.

Many of the Festival events took place under Luke Jerram's inspiring [GAIA](#)

weekend visits will require an advanced booking (weekday visits do not require prior booking).

[Find out more about Keele's COP26 Festival here.](#)



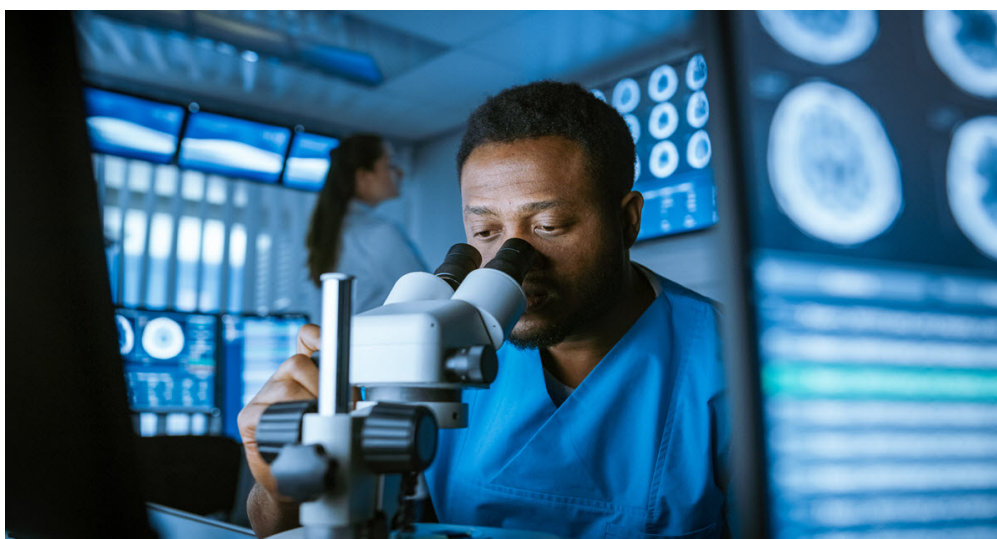
## Gateway EVENTS

### Upcoming Keele Gateway events

Keele Gateway is hosting a series of events to support businesses this December and January with many taking place in the Smart Innovation Hub.

All events will be held in-person and are free to attend, offering excellent opportunities for you to network with other local companies and get advice from a range of professional organisations. The events are as follows:

- **7 December | 09:00 - 12:00** - [Professional services drop-in clinic](#)
- **9 December | 09:30 - 10:30** - [Marketing workshop with PlinkFizz](#)
- **9 December | 12:00 - 13:00** - [Webinar - Research Scientist Apprenticeship](#)
- **11 January | 09:00 - 12:00** - [Professional services drop-in clinic](#)



### Webinar – Keele's Research Scientist Apprenticeship

You are warmly invited to a free webinar discussion regarding Keele University's Research Scientist Apprenticeship.

session will provide an overview of the apprenticeship and explore the analytical and biomedical specialisms in depth, as well as answer any questions you may have about the February 2022 intake.

[Find out more about the event and register your place here.](#)

## SIMULATE LIVE LAB



### Partner with the SIMULATE live lab project

Keele University researchers are looking to partner with local businesses to help develop new approaches to the development of sustainable mobility in the context of rural areas.

The project provides potential for businesses looking to develop new forms of electric mobility or electric micro-mobility and/or associated charging or mobility infrastructures.

The intention would be to reduce the carbon footprint of mobility in rural areas and to ensure a "just transition" encapsulating all rural businesses and residents.

To find out more and get involved, please contact Professor Simon Pemberton, Professor of Human Geography, at [s.pemberton@keele.ac.uk](mailto:s.pemberton@keele.ac.uk).

Staffordshire

Means

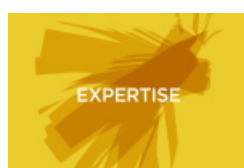
Back to Business

**Get Started scheme launched by Staffordshire County Council**

Complementing existing start-up mentoring and loans initiatives, the Get Started scheme will involve accessing the services of appointed marketing and accountancy professionals – allowing entrepreneurs to test their business model through branding packages, market testing, website guidance and financial packages to predict profitability or to create a brand or website presence for their business.

[Find out more on the Staffordshire County Council website.](#)

## Opportunities available through the Keele Gateway



Click the buttons above to find out how your organisation can benefit from partnering with Keele University.

You are receiving this email as you have either subscribed to receive information about Keele University's business support opportunities, have interacted with a previous edition of this newsletter or have engaged with the Keele Gateway in some form.

[If you no longer wish to receive communications of this type from the Keele Gateway, you can unsubscribe by clicking here.](#)

The Privacy Notice for the Keele Gateway is [available to view on our website by clicking here.](#)



**European Union**  
European Regional  
Development Fund



\*The following support programmes available within the Keele Gateway are receiving funding from the England European Regional Development Fund as part of the European Structural and Investment Funds Growth Programme 2014-2020:

- Keele University Science & Innovation Park Smart Innovation Hub (Ref: 32R17P01691);
- Smart Energy Network Demonstrator (Ref: 32R16P00706);
- Business Bridge (Ref: 32R18P02530);
- Innovation Centre Seven - IC7 (Ref: 32R19P03785).

The Ministry of Housing, Communities & Local Government (MHCLG) (and in London the intermediate body Greater London Authority) is the Managing Authority for European Regional Development Fund.

their economic development by investing in projects which will support innovation, businesses, create jobs and local community regenerations. For more information visit <https://www.gov.uk/european-growth-funding>.



---

*Copyright © 2021 Keele University, All rights reserved.*

Want to change how you receive these emails?  
You can [update your preferences](#) or [unsubscribe from this list](#).